

## EDUCATION



## EDUCATION

Stockport

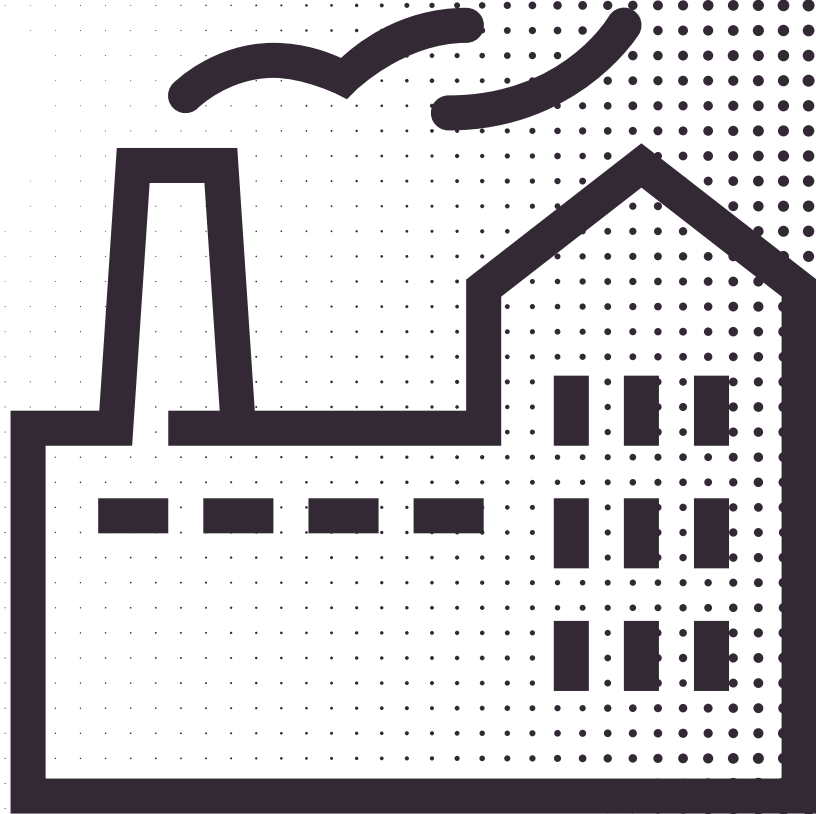
G.Manchester

**7.1%**  
employed

**8.1%**  
employed

**10,000**  
employees

**113,000**  
employees



# MANUFACTURING



# MANUFACTURING

Stockport

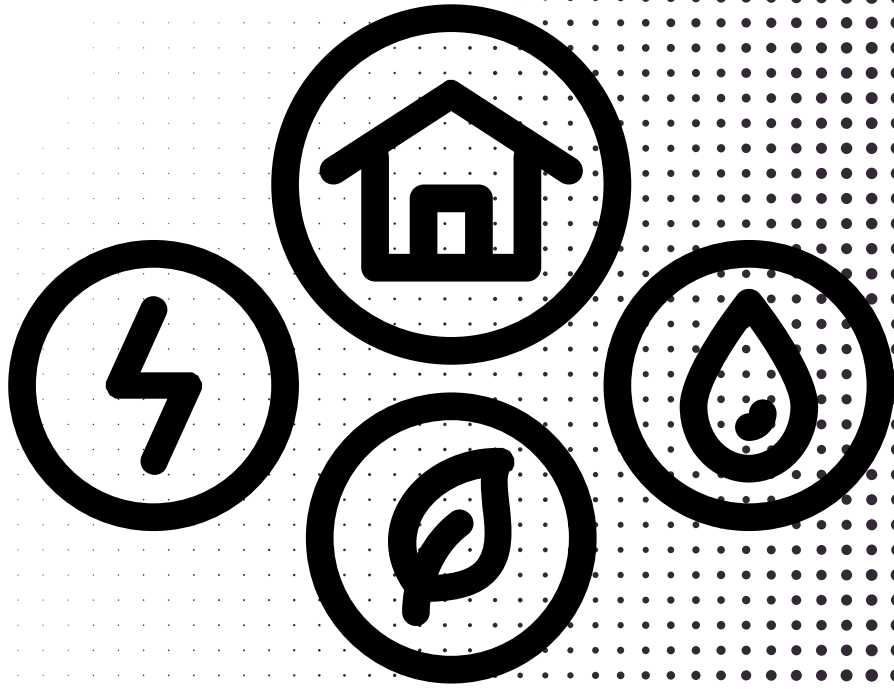
G.Manchester

**7.1%**  
employed

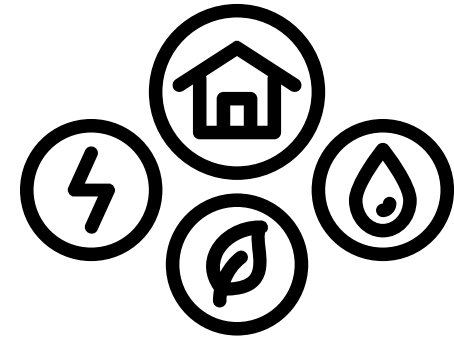
**6.8%**  
employed

**10,000**  
employees

**94,000**  
employees



## UTILITIES



## UTILITIES

Stockport

**4.7%**  
employed

**6,350**  
employees

G.Manchester

**1.1%**  
employed

**15,500**  
employees



## CONSTRUCTION



## CONSTRUCTION

Stockport

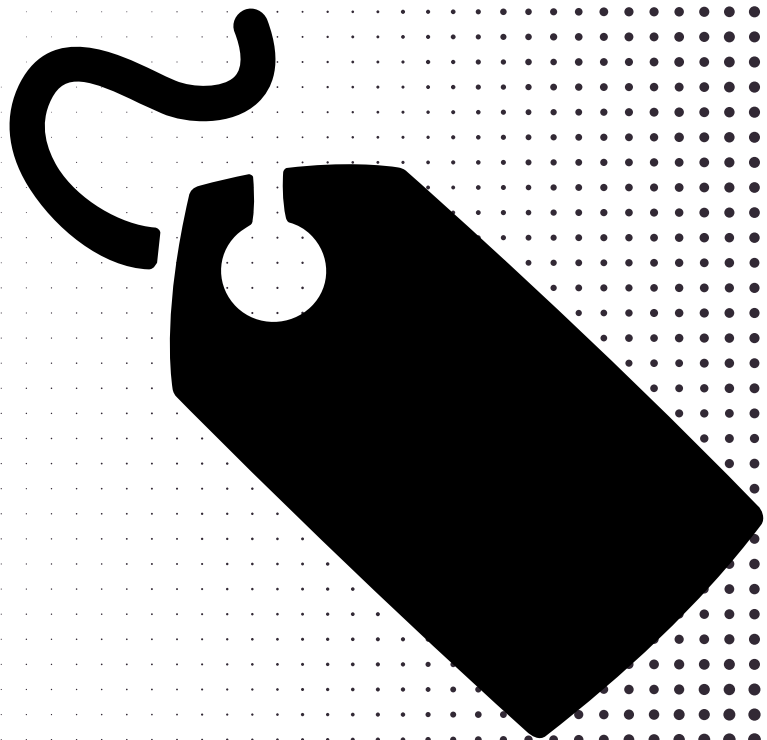
G.Manchester

**5.7%**  
employed

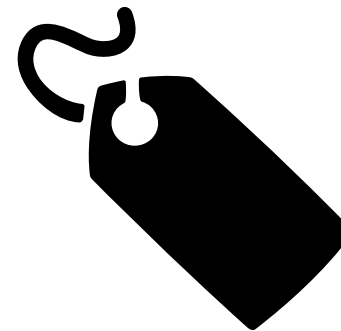
**5.4%**  
employed

**8,000**  
employees

**75,000**  
employees



**WHOLESALE & RETAIL**



**WHOLESALE &  
RETAIL**

Stockport

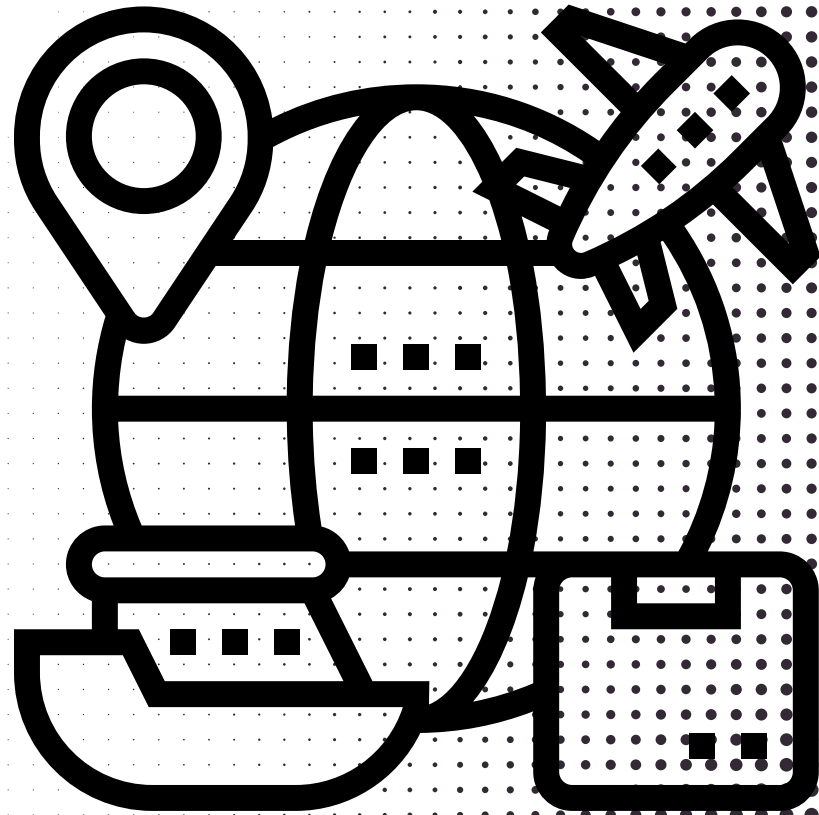
G.Manchester

**14.9%**  
employed

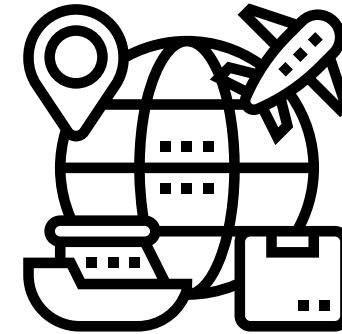
**14.5%**  
employed

**21,000**  
employees

**202,000**  
employees



## LOGISTICS



## LOGISTICS

Stockport

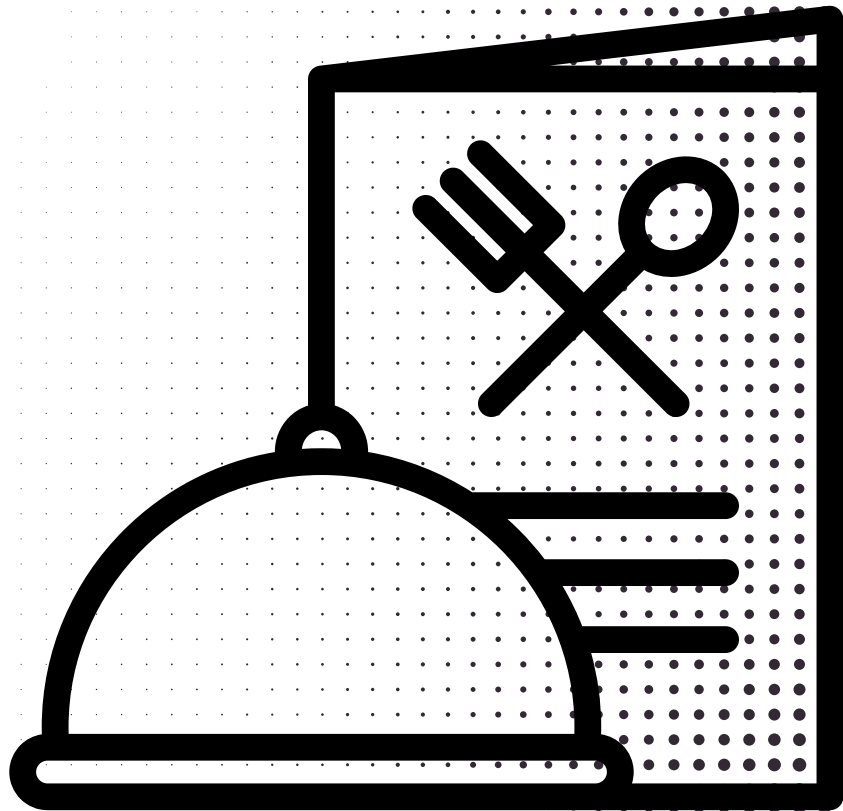
**3.5%**  
employed

**5,000**  
employees

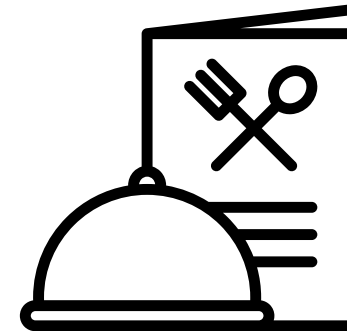
G.Manchester

**5.7%**  
employed

**79,000**  
employees



# HOSPITALITY



# HOSPITALITY

Stockport

G.Manchester

**5.7%**  
employed

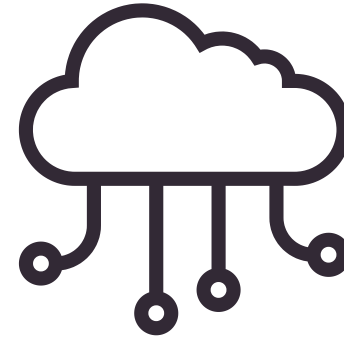
**6.9%**  
employed

**8,000**  
employees

**96,000**  
employees



## INFORMATION & COMMUNICATION



## INFORMATION & COMMUNICATION

Stockport

G.Manchester

**3.5%**  
employed

**3.6%**  
employed

**5,000**  
employees

**50,000**  
employees





**FINANCE**



**FINANCE**

Stockport

**5.0%**  
employed

**7,000**  
employees

G.Manchester

**3.8%**  
employed

**53,000**  
employees



## PROPERTY



## PROPERTY

Stockport

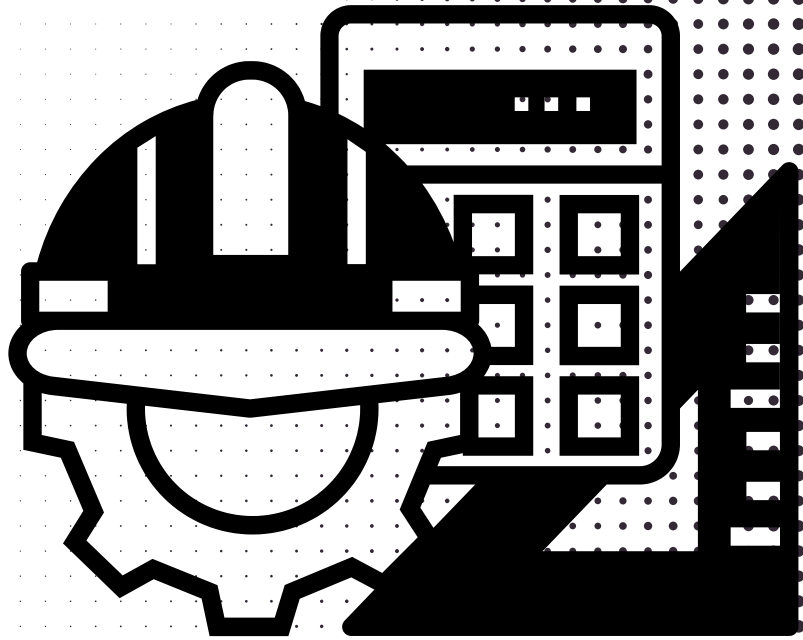
**1.6%**  
employed

**2,250**  
employees

G.Manchester

**2.3%**  
employed

**32,000**  
employees



## SCIENCE & MATHEMATICS



## SCIENCE & MATHEMATICS

Stockport

G.Manchester

**9.9%**  
employed

**10.7%**  
employed

**14,000**  
employees

**149,000**  
employees



## ADMINISTRATION & SUPPORT



## ADMINISTRATION & SUPPORT

Stockport

G.Manchester

**11.3%**  
employed

**10.0%**  
employed

**16,000**  
employees

**139,000**  
employees



## PUBLIC SERVICES



## PUBLIC SERVICES

Stockport

G.Manchester

**3.2%**  
employed

**4.5%**  
employed

**4,500**  
employees

**63,000**  
employees



## HEALTH & CARE



## HEALTH & CARE

Stockport

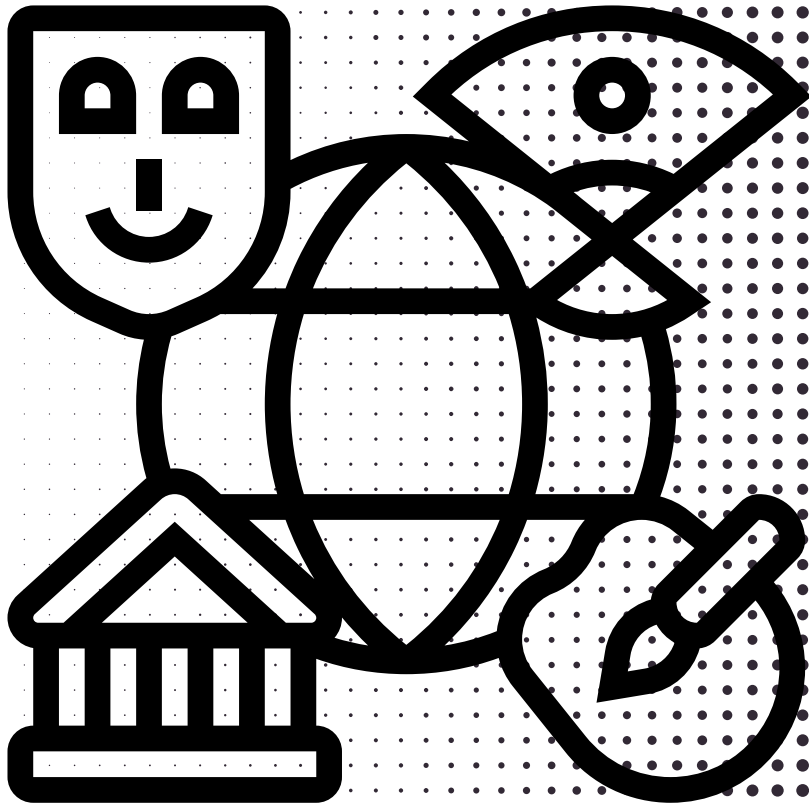
G.Manchester

**14.2%**  
employed

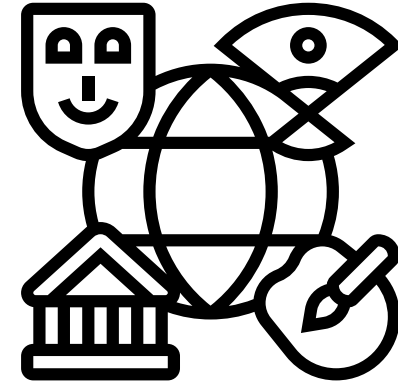
**13.1%**  
employed

**20,000**  
employees

**182,000**  
employees



## ARTS & LEISURE



## ARTS & LEISURE

Stockport

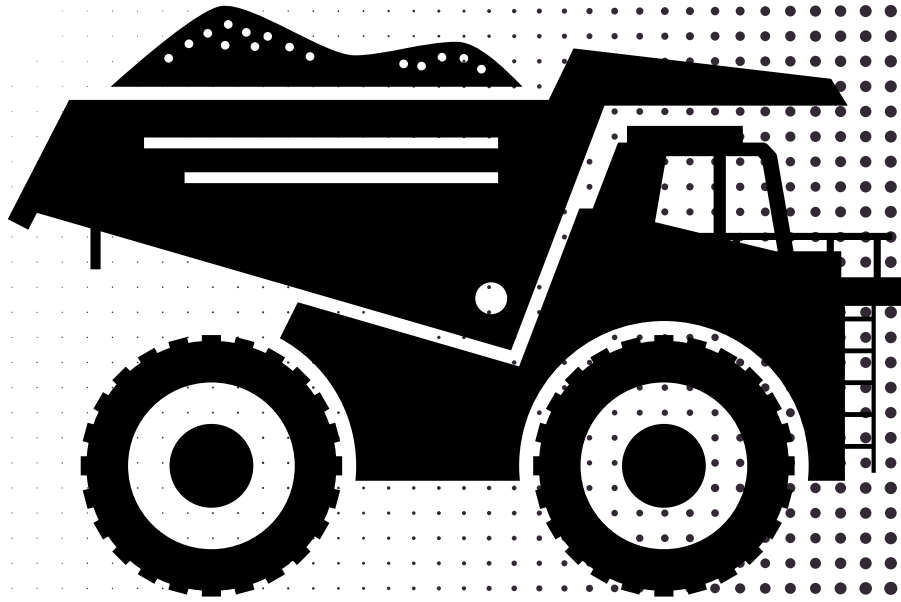
G.Manchester

**1.4%**  
employed

**2.0%**  
employed

**2,000**  
employees

**28,000**  
employees



**MINING & QUARRYING**



**MINING &  
QUARRYING**

Stockport

G.Manchester

**0.1%**  
employed

**0.0%**  
employed

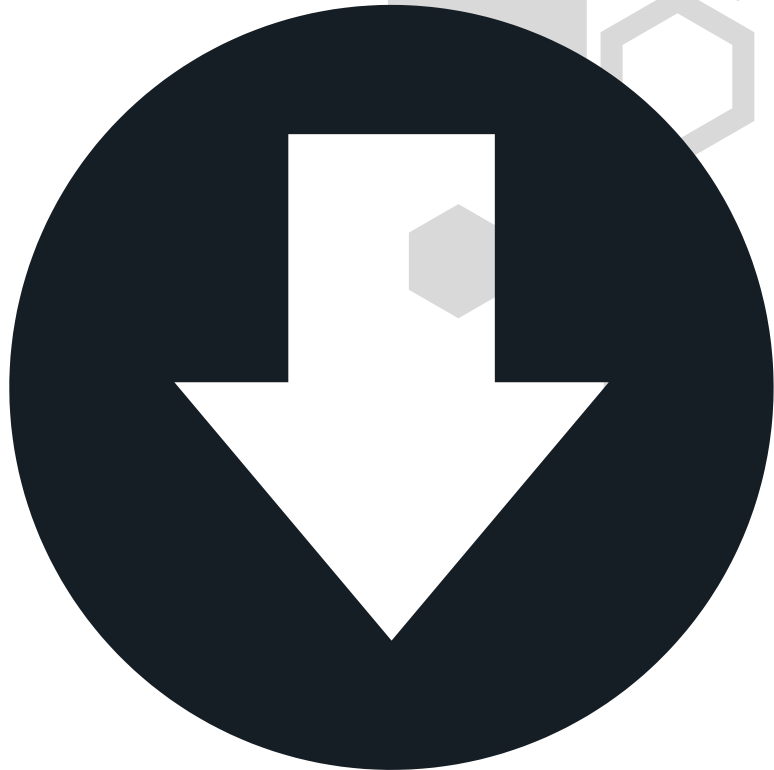
**75**  
employees

**200**  
employees





**LOWER**



**LOWER**

